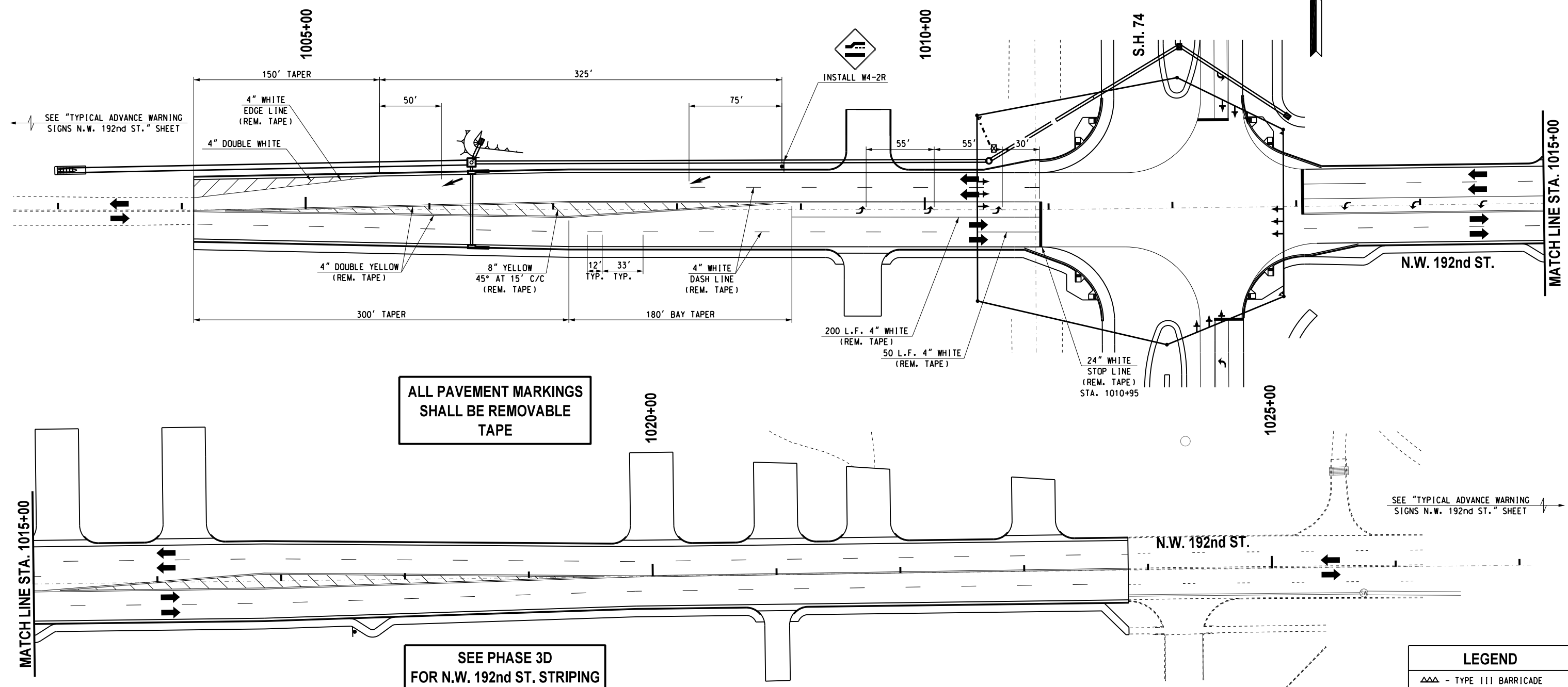
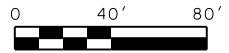


REVISIONS		
NO.	DESCRIPTION	DATE



ALL PAVEMENT MARKINGS SHALL BE REMOVABLE TAPE

SEE PHASE 3D FOR N.W. 192nd ST. STRIPING EAST OF S.H. 74

CONTRACTOR SHALL KEEP 11' MINIMUM LANES UNLESS OTHERWISE NOTED.

CONTRACTOR TO PROVIDE ACCESS TO ALL DRIVEWAYS DURING CONSTRUCTION.

SEE "TYPICAL ADVANCE WARNING SIGNS N.W. 192nd ST." SHEET

LEGEND	
△△△	- TYPE III BARRICADE W/ TWO TYPE "A" LIGHTS
●	- DRUM
○	- CHANNELIZER CONE
▬	- PORTABLE CONC. BARRIER WALL
▬▬▬	- CONSTRUCTION ZONE IMPACT ATTENUATOR
■	- WORK AREA

Design	RWR	08/10/17
Drawn	GDB	08/10/17



**TRAFFIC CONTROL
PHASE 3E
N.W. 192nd ST.**

State Job No. 14964(08) Sheet No. T62

08/10/17 G:\Projects\T-1662B SH 74 @ NW 178th, NW 192nd & NW 206th\CAD\TC PHASE 3E\NW 192ND.dgn